



LGBTQ+ Guide to Leeds

A useful list of support and social spaces for all our LGBTQ+ members, including top tips from some current students.

Hi everyone,

Welcome to your LGBTQ+ guide!

A big part of the reason I chose to come to Leeds was the huge LGBTQ+ scene there was on offer, and my time here wouldn't have been the same if I hadn't been able to find that. The best experiences, opportunities and friendships I've had at Leeds have stemmed from having the opportunity to get involved in the LGBTQ+ community and explore my own identity further.

With everything from nights out to inclusive sports organisations, there's something for everyone to get involved with, and we can always help you find, and even create, new spaces.

Your Liberation Coordinators are a team of students who represent marginalised student groups in LUU and the University. They've put together the calendar of activity and campaigning for this History Month to celebrate LGBTQ+ identities and highlight experiences. You can read more about them at luu.org.uk.

I hope you all enjoy Leeds as much as I have.

Megan
LGBTQ+ student

I'm Chloé, and I was your Equality and Diversity Officer for 2019/2020. My first year in Leeds was greatly influenced by wanting to explore my queer identity, but knowing where to start was the hardest part.

For me, it wasn't a case of 'coming out' it was more a case of 'letting people in' and so I would like to help you do the same and I want this guide to help you find your feet much easier than I was able to.

The Leeds scene is constantly changing and evolving but I hope this guide includes as much stuff as possible for you to get involved in.

I hope you feel at home here.

Chloé Elliott
Equality & Diversity Officer
2019/20

"For trans people, Rude Studios are great because they make sure in their tattoo and piercing training that they practice on all different body types. They knew all the rules about surgery before I even had to ask."

LEO

Your LGBTQ+ Directory

A useful list full of support and social spaces for all our LGBTQ+ members.

Gender Form Update	3
Hate Crime Reporting	3
Community Support and Campaigning Groups	4
Help and Support	6
Faith Spaces	7
LGBTQ+ Spaces	8
Nights Out	9
Sports	10

"Travelling Man is awesome and has a broad range of board games and comics including queer comics/manga. Plus it's right near Flamingos so you can go get a new comic then a coffee."

KAT

Gender Form Update

You can update your gender marker by filling out a Student Notification of Change Form. Return it to the Student Services Counter on Level 9 of the

Marjorie and Arnold Ziff Building. You can find the form online at students.leeds.ac.uk by searching 'Change personal details'.

Hate Crime Reporting

The University and LUU have a zero tolerance approach to hate crimes, sexual violence and harassment. You can report a crime anonymously to the University on bit.ly/luuhatecrime.

You can also report a hate crime to a scheme made up of Leeds City Council, West Yorkshire Police and Stop Hate UK. Find more information by searching 'hate crime' on the leeds.gov.uk website.

Community Support and Campaigning Groups

● ACTION FOR TRANS HEALTH LEEDS

Improving trans access to healthcare through funding access to grants. They meet on the first Sunday of the Month at Yorkshire MESMAC. You can find them on Facebook or Twitter.

● AFRICAN RAINBOW FAMILY

A support group for those of African heritage, refugees and wider BAME groups.

africanrainbowfamily.org

● BAYARD PROJECT

A social and support group for Black, Asian and Minority Ethnic LGBTQ+ communities. You can find them on Facebook.

● GAY ABANDON

An LGBTQ+ choir that is based in Leeds.

gay-abandon.co.uk

● GENDERED INTELLIGENCE LEEDS YOUTH GROUP

A Trans Leeds local youth group. You can email them for more information.

youthwork@genderedintelligence.co.uk

● LEEDS BI GROUP

A social and support group for the bisexual community, open to anyone over 18.

leedsbigroup.org.uk

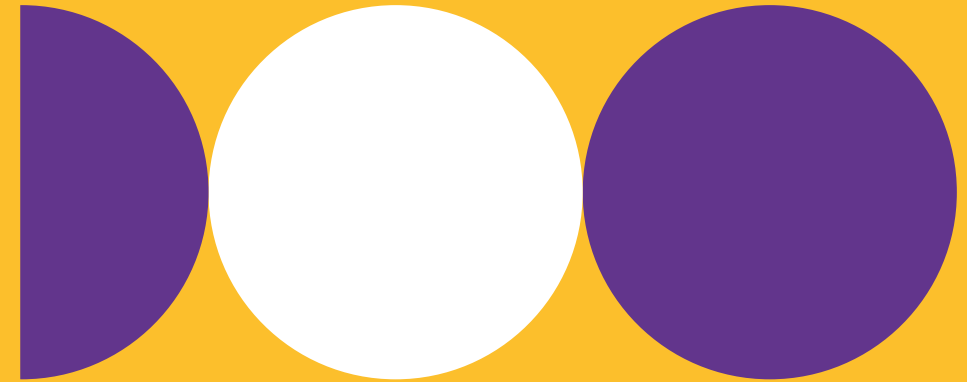
● LEEDS LGBTQ+ BOOK CLUB

A reading group that discusses LGBTQ+ fiction, non-fiction and poetry.

leedslgbtbooks.com

● MESMAC NON-BINARY LEEDS

A peer-led support and social group for non-binary people.



● LEEDS SURVIVOR LGBT SUPPORT GROUP

This group is for all LGBTQ+ people.

lsics.org.uk

● LUU LGBTQ+ SOCIETY

Here for all LGBTQ+ students, they hold coffee hours, social events and nights out.

luu.org.uk/lgbt

● QTIPOC SOCIETY

A society for queer, trans and intersex people of colour. Join for social events and coffee hours throughout the year.

luu.org.uk

● SAGE - SUPPORTING OLDER LGBT PEOPLE

A project tackling the social isolation faced by older LGBTQ+ people (50+).

mesmac.co.uk

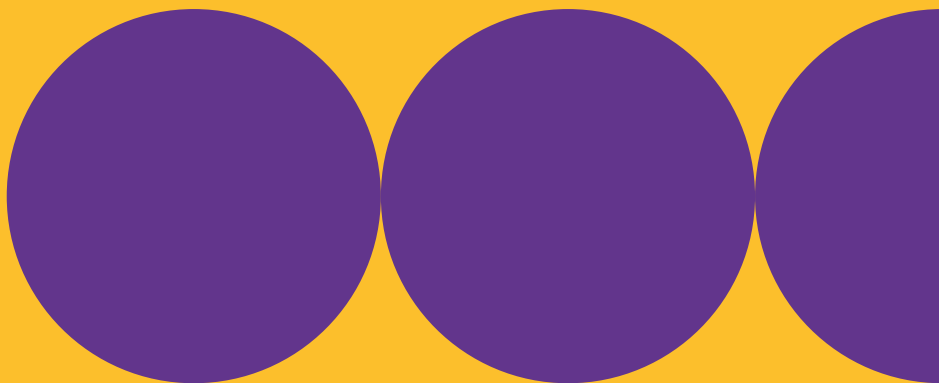
● YORKSHIRE O.P.E.N.

A monthly discussion and support group for people in or curious about ethically non-monogamous relationships.

y-open.org.uk

● YORKSHIRE TRANS* CHOIR

Meet up and sing twice a month on Wednesdays from 7:30pm-9:30pm. Search for them on Facebook.



Help and Support

● LGBT SWITCHBOARD

Talk in confidence to the switchboard about anything that is on your mind. They are on the phones from 10am-10pm.

0300 330 0630

● LUU ADVICE

Come find the Help and Support team in the Union Foyer for private, expert advice.

luu.org.uk/student-help-support

● LGBT+ DOMESTIC VIOLENCE HELPLINE

Provides confidential support for both you and your family.

womensaid.org.uk

● RAINBOW ROOFS

Support for LGBTQ+ tenants and leaseholders.

0113 378 1349

● REACH OUT

A charity for those who had to flee their home countries due to fear of discrimination and violence due to their gender identity or sexuality.

reachoutleeds@gmail.com

● TOUCHSTONE

Popular with the LGBTQ+ community for mental health support.

touchstonesupport.org.uk

● YORKSHIRE MESMAC

A charity that offers counselling, training, groups, and safe sex resources for LGBTQ+ people.

Faith Spaces

● ALL HALLOWS CHURCH

A Church of England Church in Hyde Park, very welcoming to LGBTQ+ people.

allhallowsleeds.org

● HIDAYAH

A nationwide organisation for LGBTQ+ Muslims. They campaign for social justice and give LGBTQ+ Muslims a voice.

hidayahlgbt.co.uk

● INCLUSIVE MOSQUE INITIATIVE

Dedicated to creating places of worship for marginalised communities, spiritual practice and inclusive Islamic principles.

inclusivemosque.org

● MILL HILL CHAPEL

A progressive Unitarian chapel that welcomes LGBTQ+ people.

● SARBAT

They want equality for everyone and welcome all LGBTQ+ Sikhs. Get in touch with them at **'LGBT Sikh'** on Facebook.

● SINAI SYNAGOGUE

Open to anyone who wishes to establish and nurture a connection to Judaism.

sinaileeds.uk

● QUEER CHURCH LEADS

A Facebook group that actively celebrates LGBTQ+ people and aims to create a safe space of worship and discussion.

● QUEER SPACE AT THE UNIVERSITY CHAPLAINCY

The Chaplaincy hosts a space for LGBT+ Christian students and their allies. Tuesdays during term time, 5pm-6pm.

LGBTQ+ Spaces

● AIRE PLACE STUDIOS

A Leeds-based creative space. They are a predominantly LGBTQIA+ community interest company providing exhibition opportunities, low and cost workspaces.

● THE BOOKISH TYPE

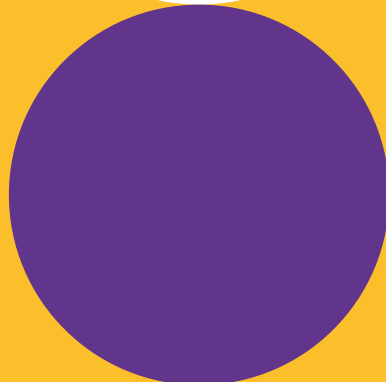
An independent Queer bookshop. You can find them in the Merrion Centre in the City Centre.

● CHUNK

A rehearsal studio, music venue and art space in Leeds that hosts Queer nights.

● FLAMINGOS COFFEE HOUSE

LGBTQ+ coffee house, it is dry, holds events and they donate a portion of their profits to different LGBTQ+ charities each month! Find them at the Central Arcade in the city centre.



Nights Out

● BLAYDS BAR

Small and secluded, it's popular with womxn. Search **'Blayds Bar'** on Facebook for more information.

● FIBRE

A four-floor super bar.

barfibre.com

● THE KEY CLUB

Although not a LGBTQ+ club by nature, Key Club is incredibly accepting of everyone who walks through the door. Emo music with cheesy bangers.

thekeyclubleeds.com

● THE NEW PENNY

Recently given a blue plaque for its work with the LGBTQ+ community. Expect cheesy songs. Search for **'The New Penny'** on Facebook.

● QUEENS COURT

Known for its involvement in courtyard parties - a bar, a pub, it even does food.

queenscourtleeds.com/leeds

● VIADUCT SHOWBAR

Home of cabaret, best known for its themed nights, quirky bar staff and talented drag queens.

viaductleeds.com

● WHARF CHAMBERS

A member-owned co-op with loads of really cool events. Home to Love Muscle, the pumping gay dance party.

wharfchambers.org

Sports

● BAD MITTENS

An inclusive badminton group.

'Bad Mittens' on Facebook.

● INCLUSIVE SPORTS SOCIAL

Leeds' inclusive sports and active lifestyles groups hold monthly socials.

@leedsigbt sport on Twitter.

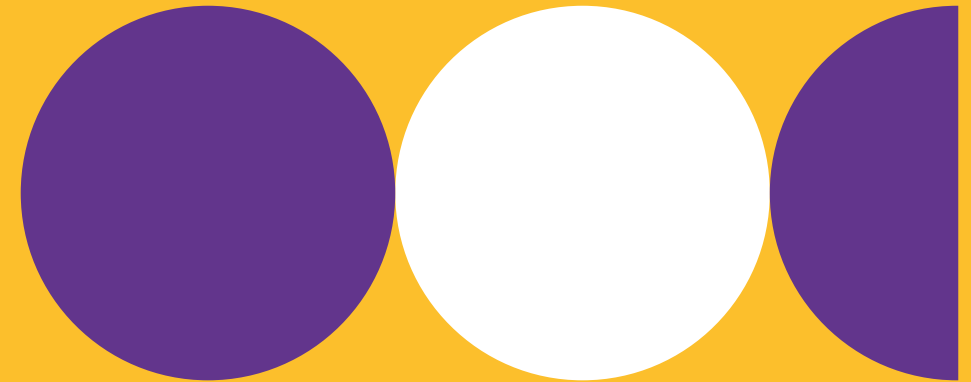
● THE HILLS HAVE GAYS

LGBTQ+ walking/adventure group, dogs are welcome! You can find them on Facebook.

● LEEDS FRONTRUNNERS

A running group set up for the LGBTQ+ community and their friends. They aim to be the friendliest running club in Leeds and are part of International Frontrunners (IFR).

'Leeds Frontrunners' on Facebook.



● STRIKE-BACK KICKBOXING

Open to all ages, this is an LGBTQ+ kickboxing group aiming to challenge homophobic views while developing self-defence and kickboxing skills.

strike.back.kickboxing@gmail.com

● LEEDS HORNETS RUFC

An inclusive rugby union team that trains Mondays and Wednesday at 7pm at Leodiensians Rugby Club. You can find them on Facebook!

● LEEDS HUNTERS

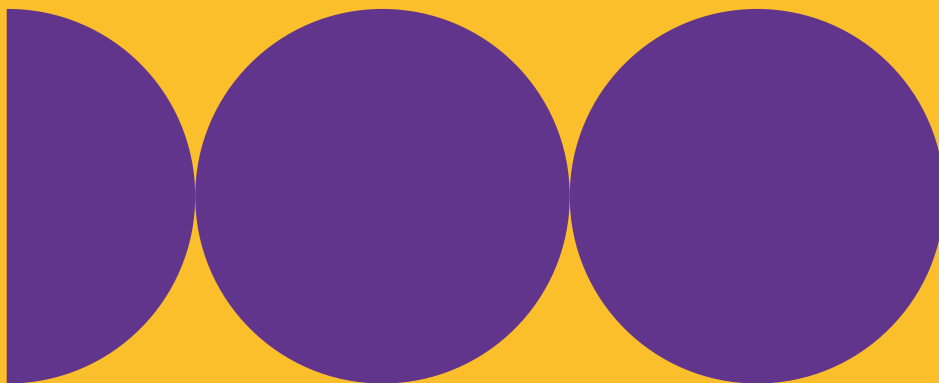
An inclusive rugby group open to all gay, bisexual and straight males of any age.

theleedshunters.com

● YORKSHIRE TERRIERS FC

A gay friendly football team.

terriersfc.co.uk



"For LGBTQ+ people who are fond of getting piercings and tattoos but aren't sure which places will be friendly, then Red Tattoo and Piercing are brilliant."

ISABELLE

"Not specifically LGBTQ+ but Key Club has always been a banging night out for anyone and everyone."

JOSH

"I'd say that the place in Leeds that by far is the best for LGBTQ+ people to go out drinking and to events is Wharf Chambers — it's completely safe and feels like a proper little community."

JESS

If you want to write about your experiences as an LGBTQ+ student at Leeds and be featured on our Medium account, get in touch.

luu.pet@leeds.ac.uk

medium.com/leeds-university-union